

IMPIEGO

Definitiva da spartitraffico.

CAMPO DI RESISTENZA

Ru compresa tra 200-600 KN

CLASSE

B

MATERIALI

CALCESTRUZZO

RcK \geq 450 daN/cm²

ARMATURA

Acciaio Fe B44K

GIUNTI

Barre FeB32K

COMPORTAMENTO PROBABILE

	AUTOVETTURE	AUTOCARRI LEGGERI	AUTOCARRI PESANTI
RESISTENZA ALL'URTO	Ottima	—	Buona
DISSIPAZIONE DI ENERGIA	Effetto N.J.	—	Notevole
POSSIBILITÀ DI RIDIREZIONE	Ottima	—	Buona
PROBABILITÀ DI SCAVALCAMENTO	Nessuna	—	Media
INGOMBRO/DEFORMABILITÀ	Minima	—	Notevole
MANUTENIBILITÀ	Buona	—	Buona

OMOLOGAZIONE

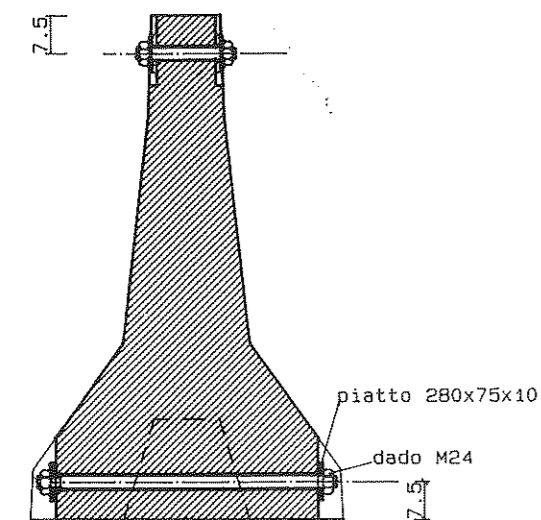
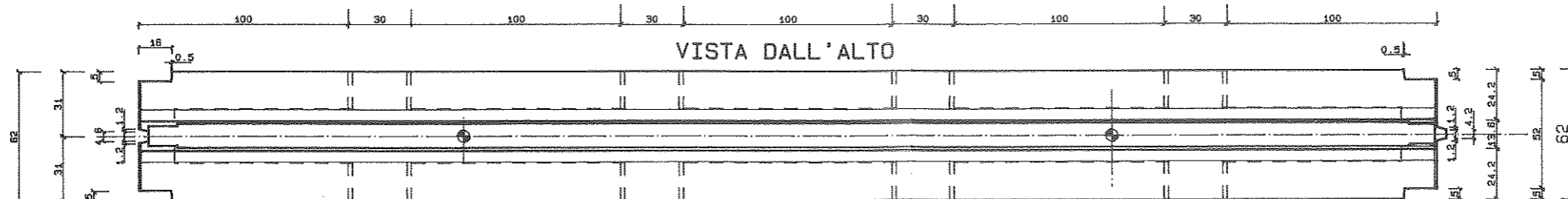
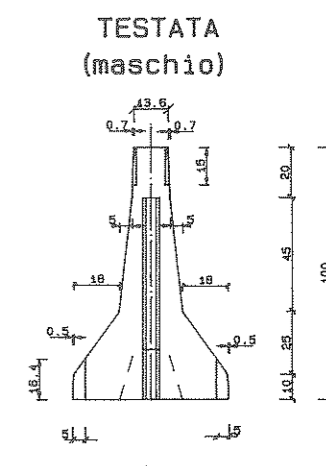
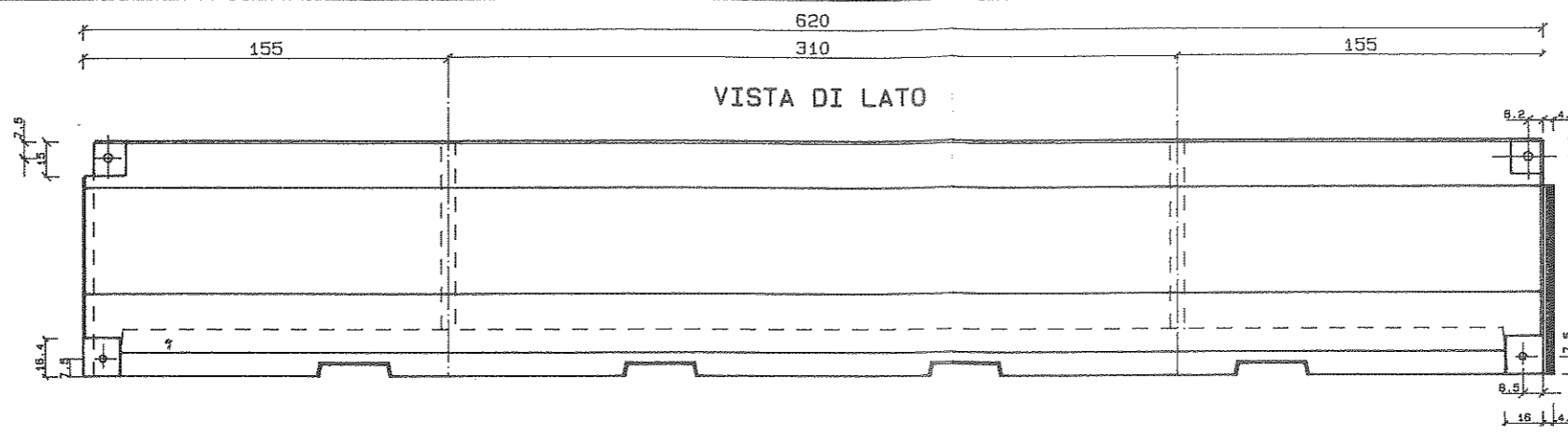
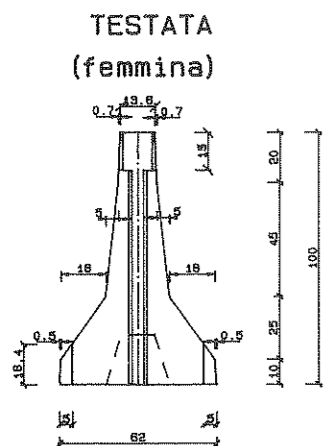
Strade extraurbane di tipo III° e strade urbane primarie e di scorrimento in presenza di prevalente traffico medio-leggero. Autostrade con spartitraffico di larghezza \leq 2.40 m.

CERTIFICAZIONE

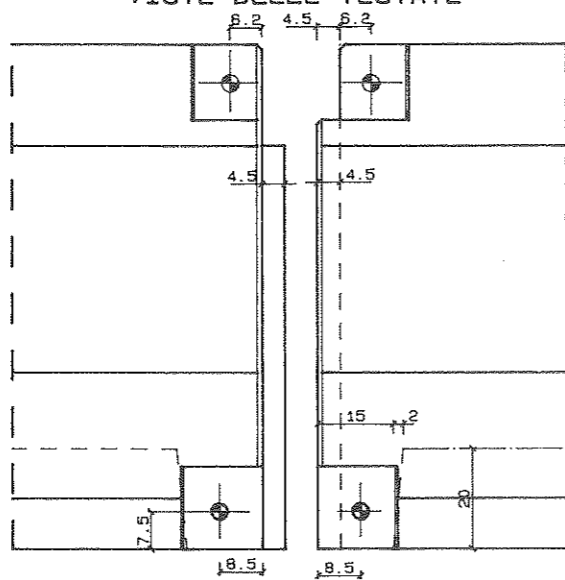
Basata sul complesso di prove eseguite sulla pista di Anagni nel periodo gennaio 1987 - aprile 1988 e depositata globalmente presso il Ministero LL.PP. Consiglio Superiore V Sezione.

DATA INSERIMENTO IN CATALOGO

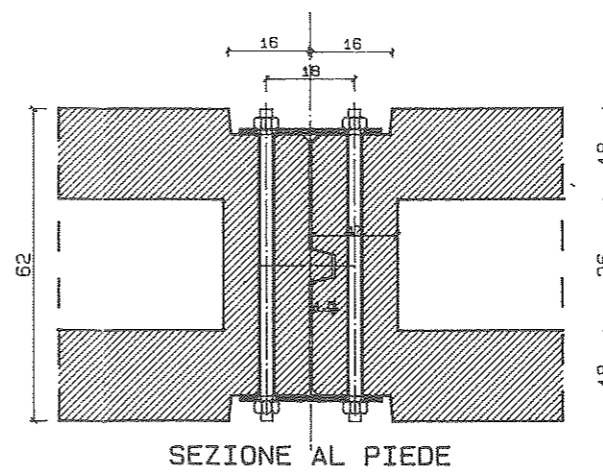
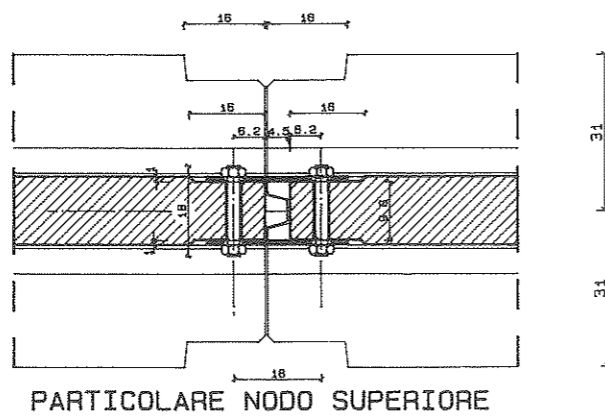
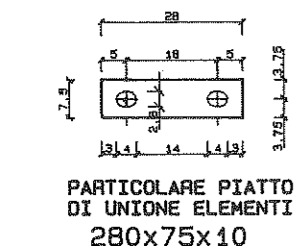
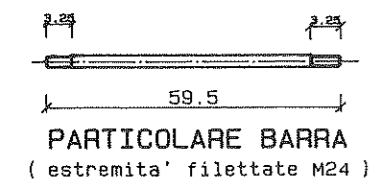
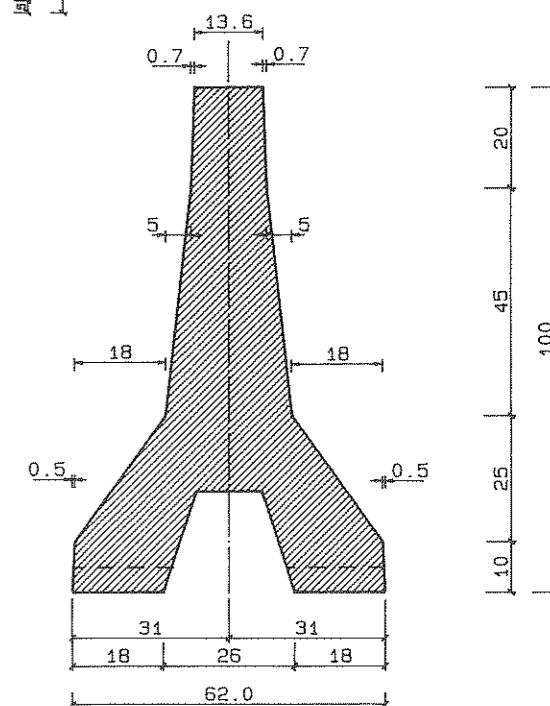
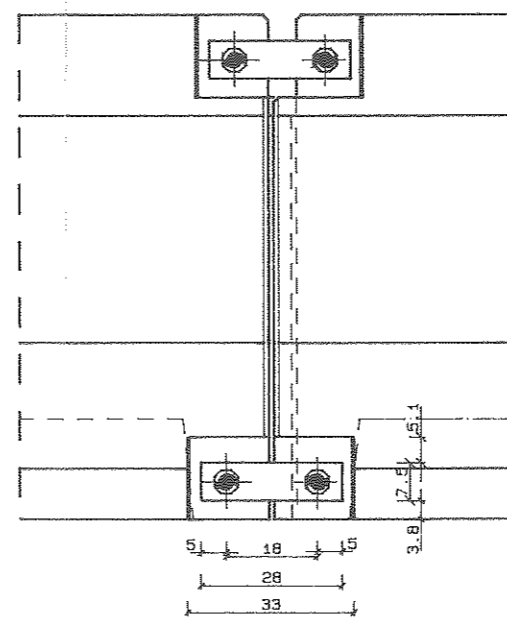
05.05.1988



VISTE DELLE TESTATE

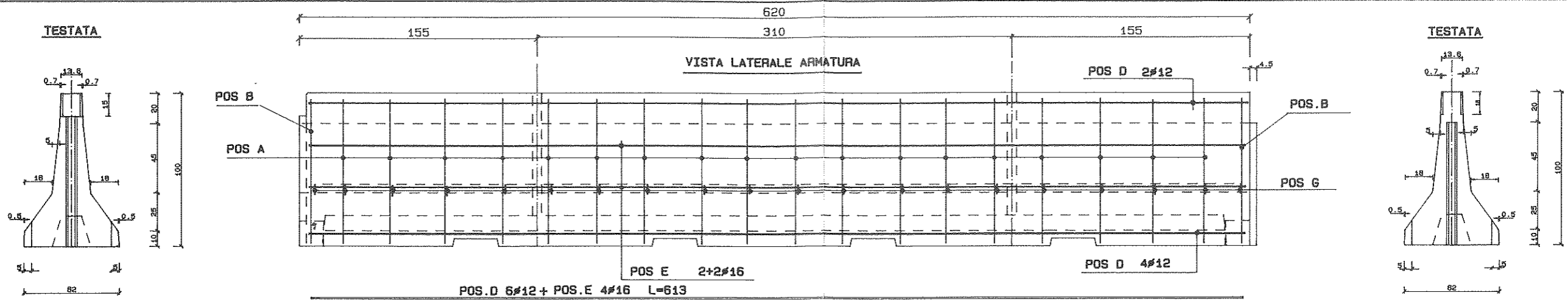


VISTA SUL GIUNTO

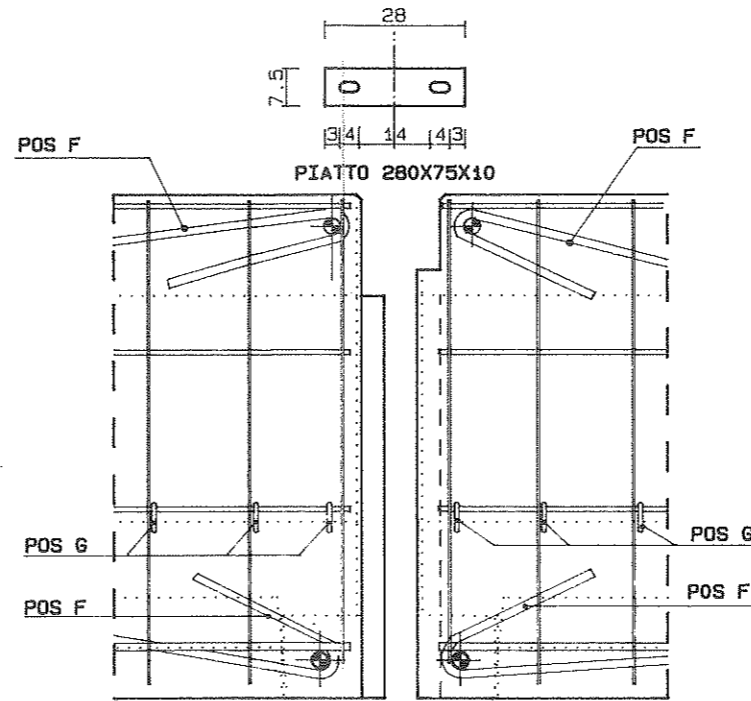


MONOFILARE RINFORZATA

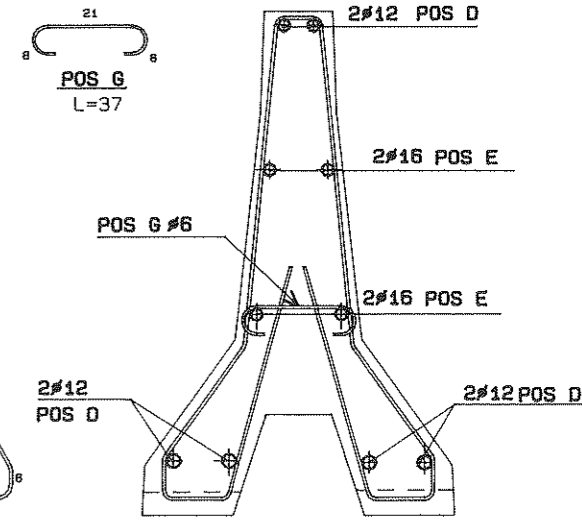
ARMATURA



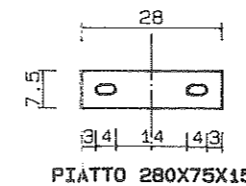
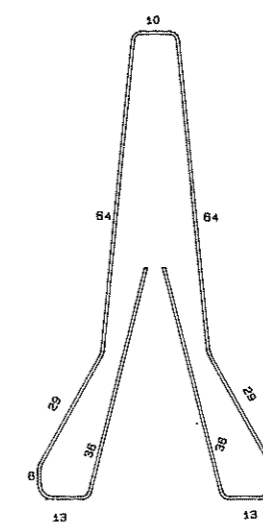
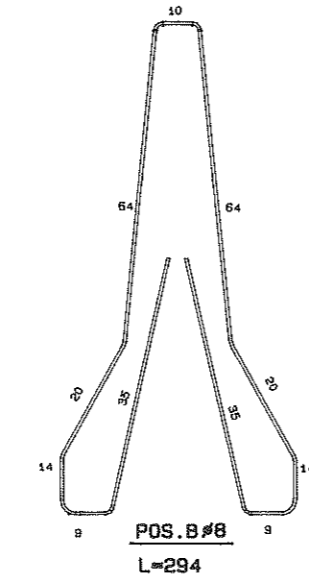
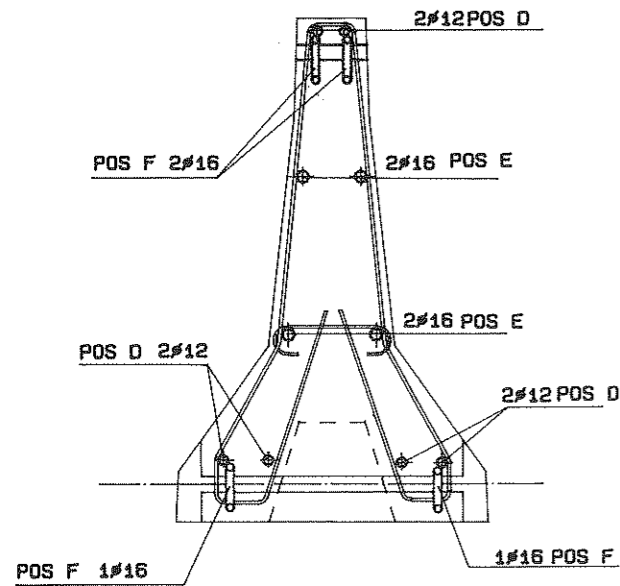
VISTA LATERALE ARMATURA ALL'ESTREMITA'



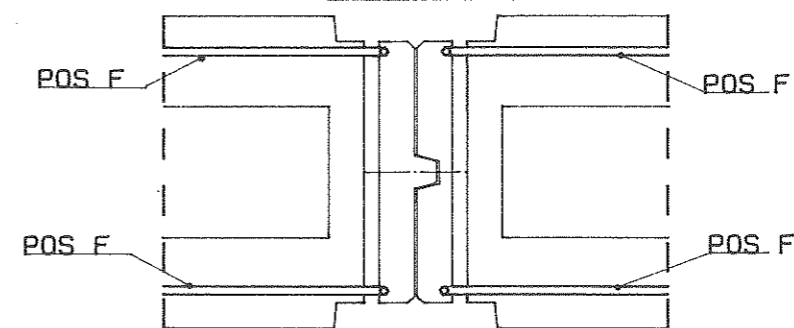
ARMATURA IN MEZZERIA



ARMATURA ALL'ESTREMITA'



VISTA DALL'ALTO



RINFORZO SUI MANICOTTI

POS.	N.	L.unit.	L.tot.	∅	Tot.kg.
A	18	3.06	55.08	∅8	21.75
B	2	2.94	5.88	∅8	2.32
D	6	6.13	36.78	∅12	32.66
E	4	6.13	24.52	∅16	38.69
F	8	1.50	12.00	∅16	18.93
G	20	0.37	7.40	∅6	1.64
					115.99

